

XEBEC®

ISO 9001 Certified

XEBEC products are manufactured in a plant certified by ISO9001, the international standard of quality control and assurance.

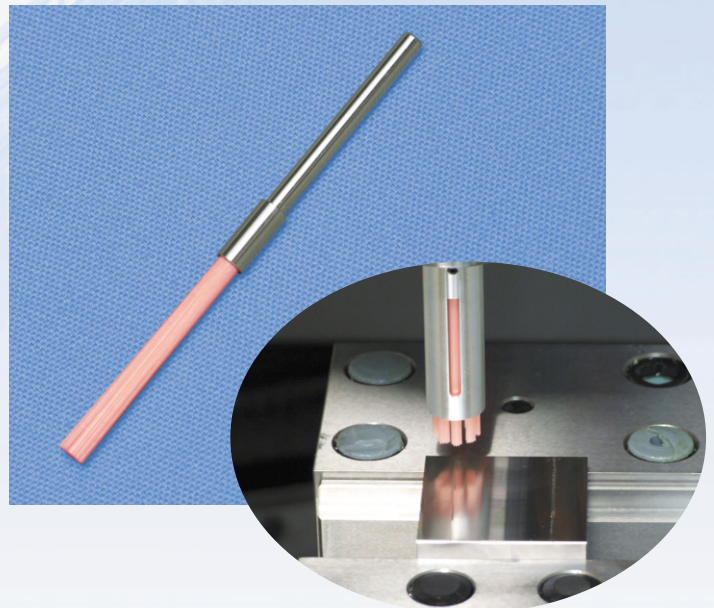
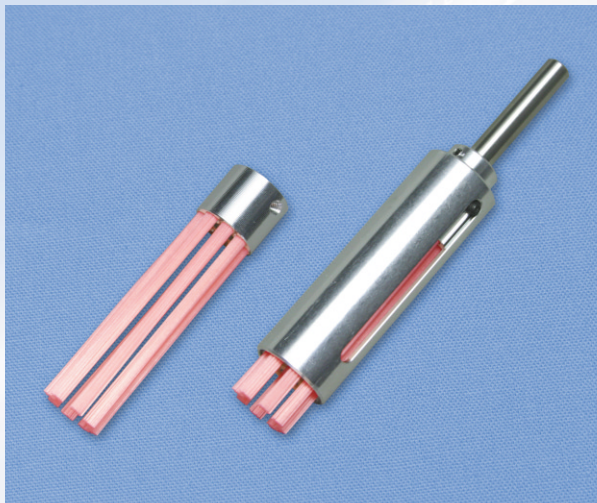
Cutting Fiber

for Precision Deburring

NEW!

Cutting Fiber

- Precision deburring is possible without breaking the edge.
- No surface scratches even in soft material such as Aluminum alloy.
- Ideal for deburring of small bores ($\phi 0.3\text{mm}$) or grooves (0.5mm).

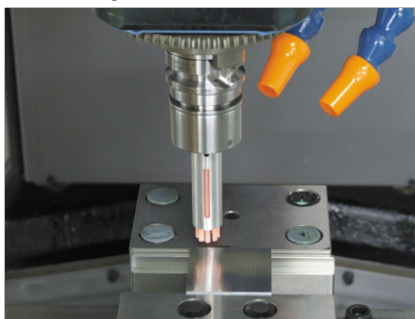


Features

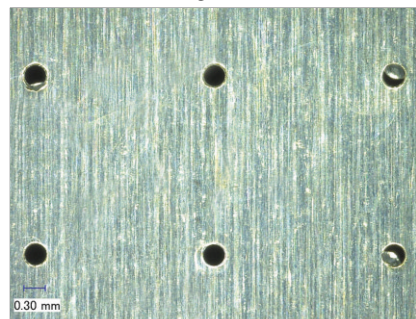
- An addition of a softer brush to the current XEBEC Cutting Fiber product lineup for detailed deburring of more precise parts.
- Softer, more flexible cutting fiber bristles than existing products.
- It will not deform unlike nylon brushes.

Applications

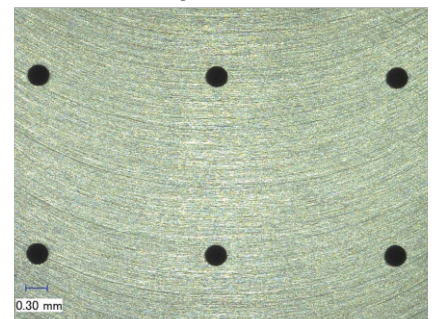
Deburring of 0.3mm drilled holes



Before deburring



After deburring

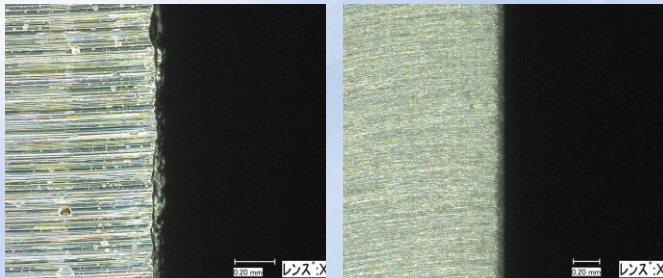


Also, cleaning of inner cylinder wall of bores is possible.

XEBEC® Cutting Fiber for Precision Deburring

Data

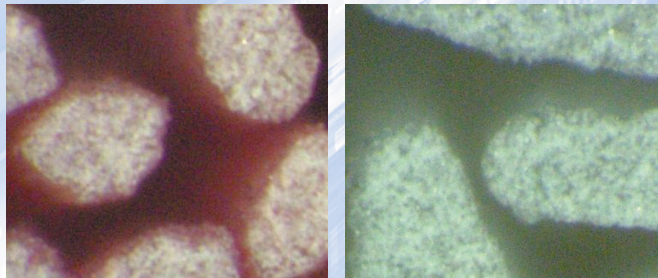
● Edge finishing of Aluminum alloy (A5052)



Before

After

● Cross-sectional figures of brush fibers



A13 brush (Pink)
(Approx. 0.4x0.3mm, New)

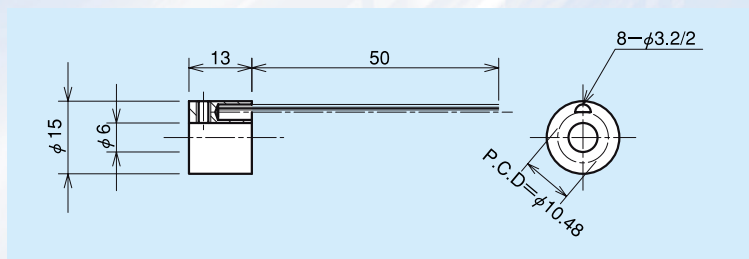
A21 brush (White)
(Approx. 1.5x0.5mm, Existing)

Product code and specification

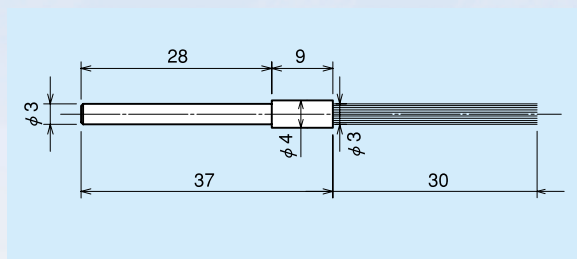
Product code	Fiber rod (color)	Brush diameter	Bristle length	Corresponding sleeve
A13-CB15M	A13 (Pink)	φ15mm	50mm	S15M
A13-EB03M	A13 (Pink)	φ3mm	30mm	—

* Use Low Load Spring in case using XEBEC Floating Holder (FH-XBC)

A13-CB15M



A13-EB03M



Precaution in use

■ Pre-operation inspection

- Conduct a test run for 1 minute or more before starting the operation and 3 minutes or more after changing a tool to confirm if there is any abnormality including vibration and looseness in the mounting place of the tool. Even if there is no abnormal condition observed in the test run, stop the use immediately in case any abnormality, such as vibration is observed while using the tool.

■ Maximum revolutions

- Please use below the maximum revolutions in following table. Usage above the maximum may be dangerous because it may result in breakage of brush fibers.

Product code	Fiber rod (Pink)	Brush diameter (mm)	Bristle length (mm)	Maximum revolutions (min ⁻¹)
A13-CB15M	A13 (Pink)	φ15	50	6,000
A13-EB03M	A13 (Pink)	φ3	30	6,000

■ Depth of cut, Grinding load

- Wear the protective equipment, such as protective goggles, gloves and masks all the time while operating the tool. Wear long-sleeved clothes and tighten the cuffs to protect your skin.
- Processing is the most effective using the tips of the fine alumina fiber rod. For the cutting depth, use 0.5mm to 1.0mm as a guideline, up to 1.5mm.

■ Protection

- Usage under excessive depth of cut or grind load may not result in the desired results, as well as shortened brush life caused by pronounced wear and breakage of the fiber rods.

■ Beware of grinding dust

- Rotation of the tool will produce grinding dust from the part where the tool is applied and scatter the grinding dust around, so collect the dust with dust collector, etc.
- When using on high-precision processing equipment, the abrasive powder may adversely affect the sliding parts, so please be sure to collect any dust and keep clean the equipment.

■ Caution to your surroundings

- To avoid any danger caused by scattering of broken pieces or grinding dust from the tool while operating, enclose the working area with a safeguard to prohibit any person from entering into the dangerous area except the operator, or instruct any person working around the working area to wear the protective equipment.

⚠ Warning

- Follow the precautions in use and safety measures for operators above without fail. If you fail to observe them, broken pieces of the tool or grinding dust may stick into your skin, or at worst stick into your eyes, causing blindness.

Please visit our homepage for details. — URL <http://www.xebec-tech.co.jp>

XEBEC® XEBEC TECHNOLOGY CO.,LTD.

Head Office 4-3-3 Koujimachi, Chiyoda-ku, Tokyo, Japan
Phone. +81-3-3239-3481 FAX. +81-3-5211-8964
U R L <http://www.xebec-tech.co.jp>
E-mail info@xebec-tech.co.jp

Factory and R/D 4061-1 Minami-Minowa-mura, Kamiina-gun, Nagano, Japan
Phone. +81-265-73-1523 FAX. +81-265-73-0375

Your order